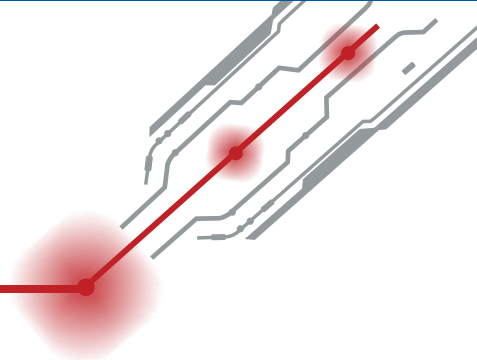


LASER STATION

LM08/10C.W



- Laser precision machining cutting, welding, drilling, engraving.
- Laser source IPG-YLS-2000-S2T 2kW.
- Integration with laser sources Nd: YAG, CO₂ or diode laser.
- Connection option of working gas CO₂, O₂, N₂, Ar, He.
- Granite table.
- Automatically controlled working axis.
- Height adjustable working desk.
- Automatic tool for rotary components.
- Variable clamping possibilities.
- Safety circuit.
- Process setting and control via the control panel.
- Enable remote service.

LASER MACHINING CENTER LM08/10C.W

TECHNICAL PARAMETERS

Travel distance of linear axes

X - axis	1000 mm
Y - axis	800 mm
Z - axis	400 mm
Z1 - axis	200 mm
B - axis	Manual
C - Axis	Auto

Repeating accuracy	± 15 µm
Positioning accuracy	± 30 µm
Maximum feed rate	30 m/min
Acceleration	3 m/s ²

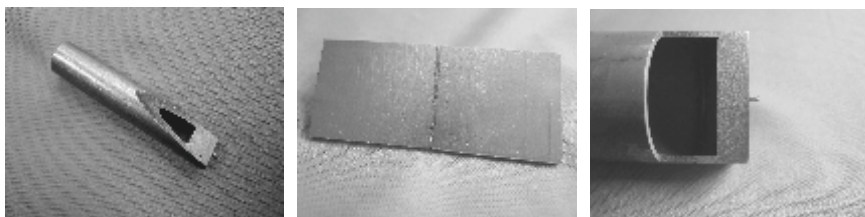
- Movements of X and Y are secured by accurate hardened linear guides in the granite table.
- AC - servo motors or AC - direct drives.
- CNC control system - SINUMERIK 840D including LCD panel.
- Sliding door with protective glass.
- Connection option of working gas.
- Laser Class 1

DIMENSIONS

Width	2500 mm
Depth	3100 mm
Height (door closed/open)	2500/3050 mm

INSTALLATION DATA

3 AC 400V + N + PE
50/60 Hz
20 A (without laser source)



VISION UNLIMITED